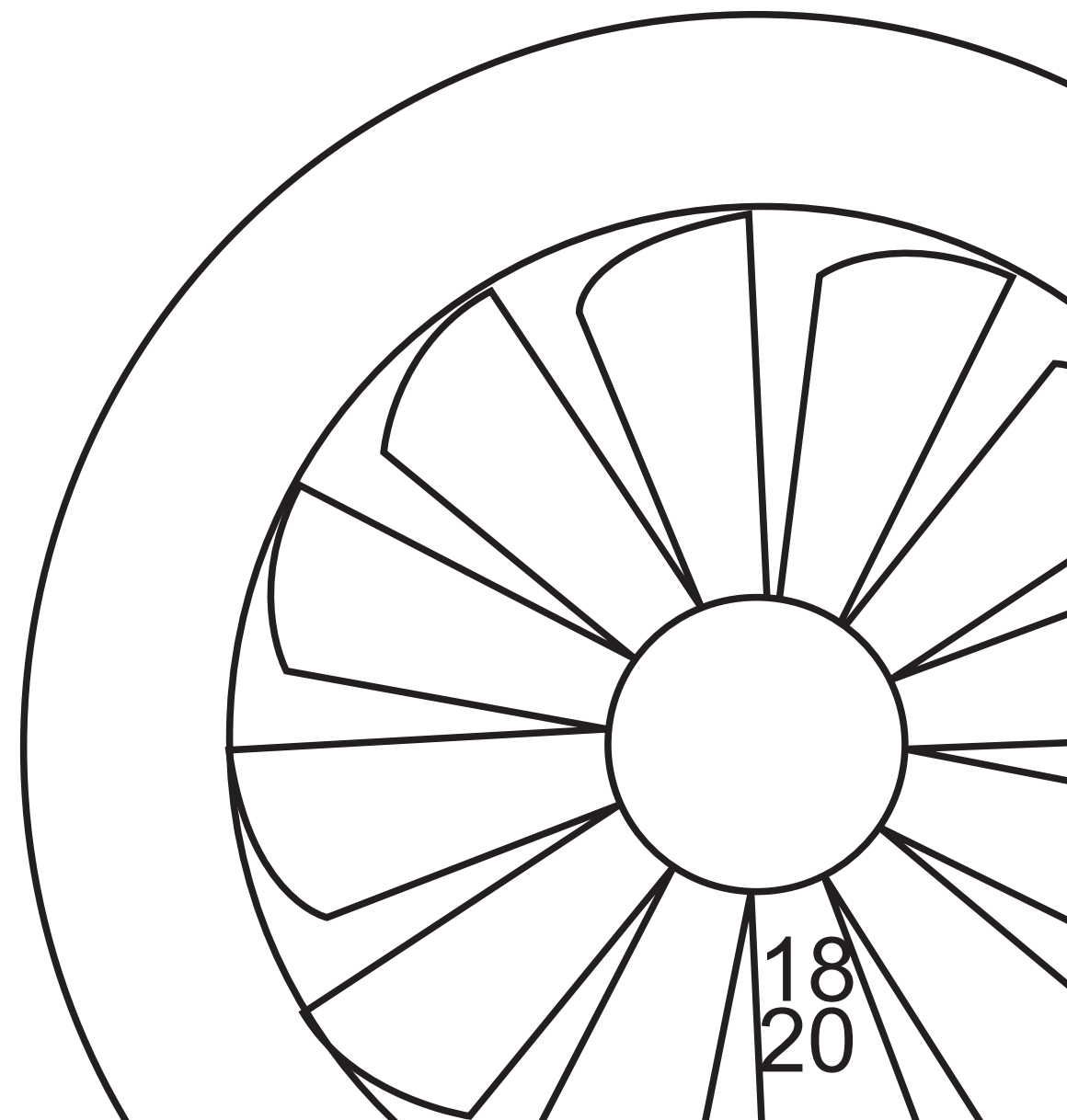




AIR DIFFUSER&GRILLE

SERIES PRODUCTS

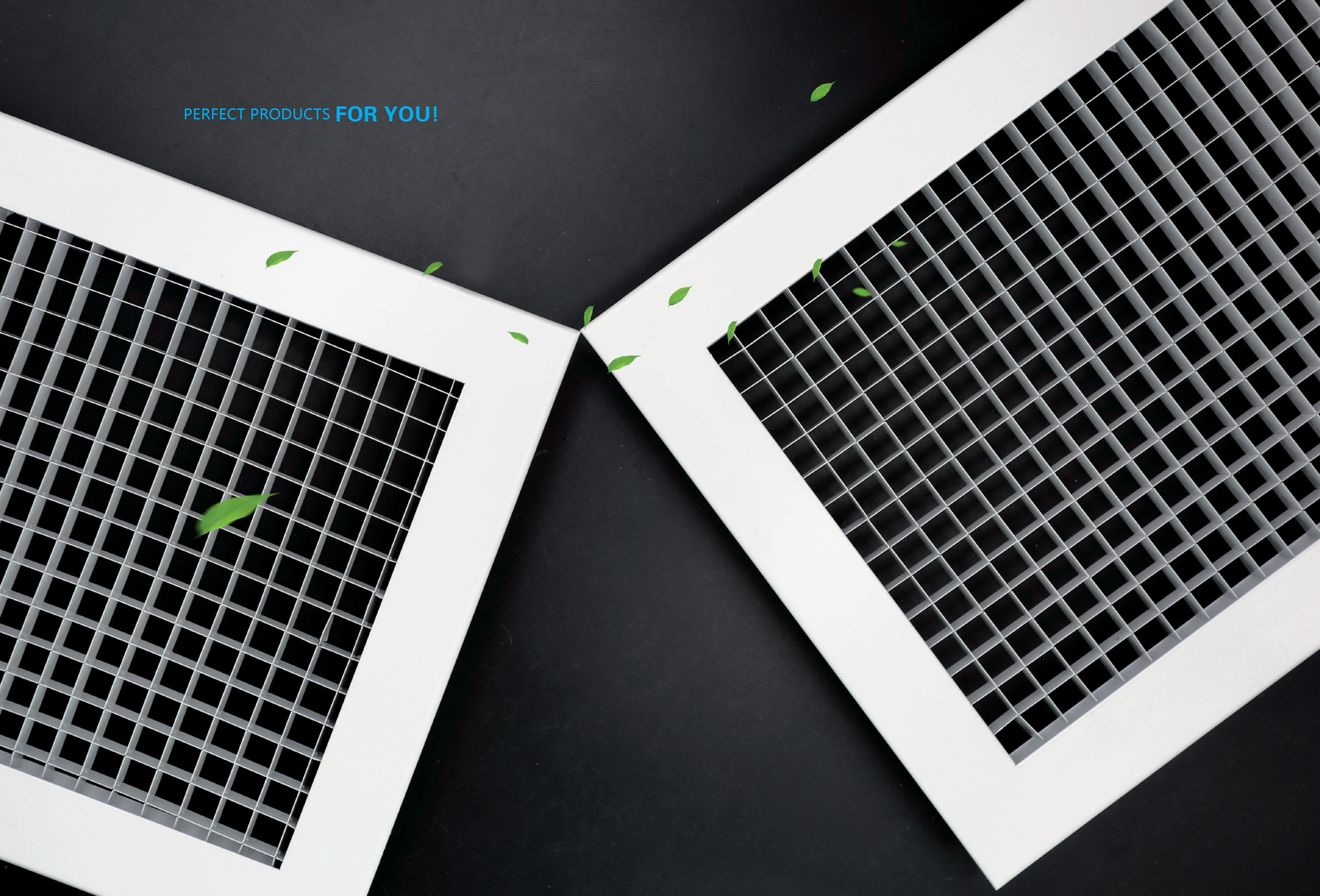


GUANGZHOU YI ZHONG ALUMINUM INDUSTRY CO., LTD


<http://www.yizhongalu.com>
[Mail://master@yizhonglvye.com](mailto:master@yizhonglvye.com)

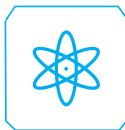
Address : Room 8053, 5/F, No. 99, Hualei Road, Liwan District, Guangzhou,Guangdong, China
Tel:86-20-81554508/81551627
Fax:86-20-31020255


PERFECT PRODUCTS **FOR YOU!**




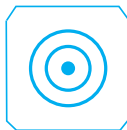
● WARE HOUSE


- 

Fine Airtightness
- 

High Compression strength
- 

Anti-corrosion
- 

Brief Installation
- 

Beautiful Shape
- 

Precision Manufactured





● BRIEF
INTRODUCTION

Founded in 1993, Yizhong Company is a company that specializes in R & D, manufacturing and sales of clean room aluminum profiles, air conditioning frame aluminum profiles, air diffuser aluminum profiles, clean room doors, medical doors, automatic doors, and ecological doors. Widely used in medical and health, biopharmaceutical, food and beverage, machinery and electronics industries. Product introduction of a full set of CNC processing equipment, is the product quality in the same industry leading position.

We uphold the “people-oriented” enterprise development strategy, wholeheartedly for you to provide top quality products and superior service. For example, in air grille manufacture and clean room aluminum profile usage, we not only guarantee the quality of product surface finish handling, but also consider the appearance, cost competitiveness and other factors for customers, be sure the products have more competitive power in the market.

Yizhong always pace with market, continuously introduce advanced management mode and production equipment, and always concentrates on environmental and time-leading aluminum profile product. The advanced production equipment, scientific procedure control and strict quality examine that set the solid base of our market.

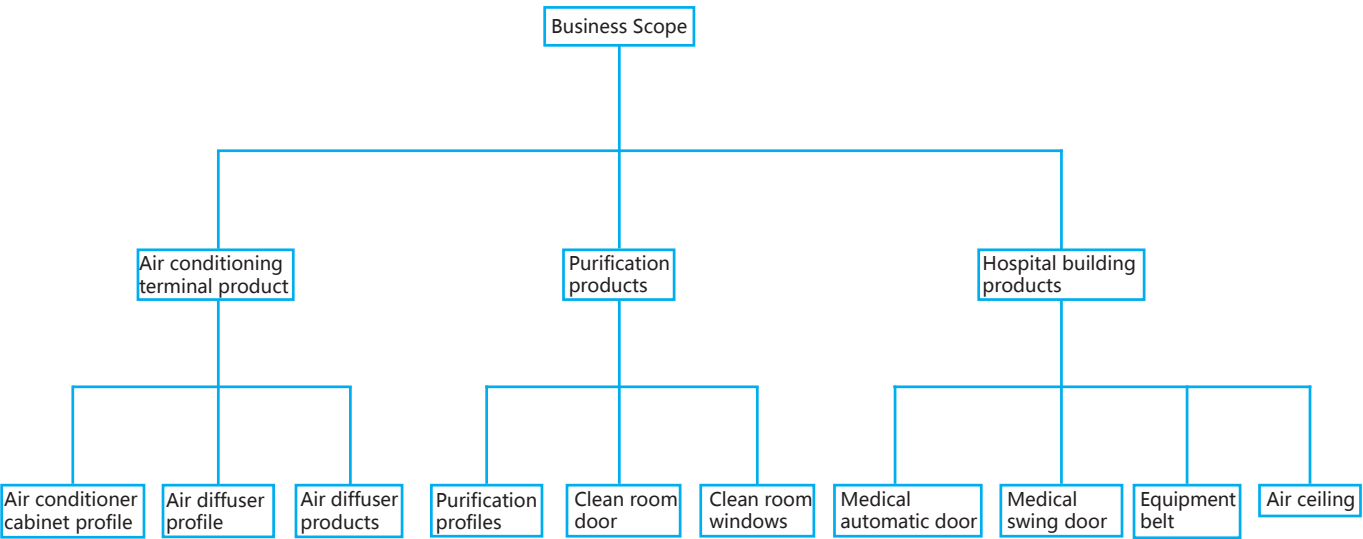
Since the company was established, we have been expanding domestic and foreign markets. Moreover, with well products and service, we gain the high reliance from our domestic and foreign customers. Our products were certificated “Patent certification of design” , “Practical patent certification” , and pass the “ISO9001 quality management system certification” .

The demand of customers is the foundation for us to survive and develop.

Surpass the expectation of customers is the method for us to succeed.

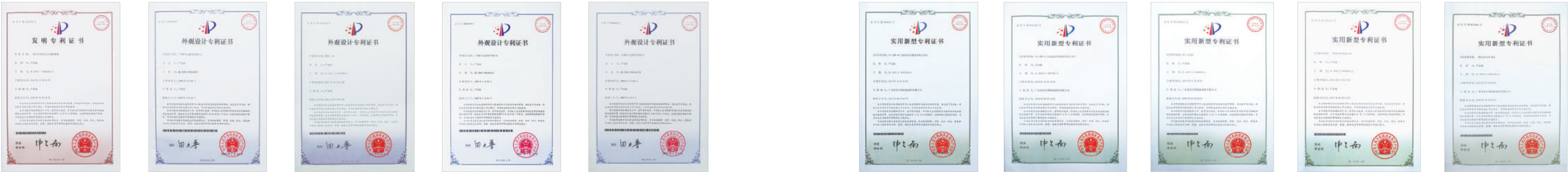
Yizhong will continue to keep our developing strategy that combines techniques, quality and service. With innovating techniques, excellent quality and quality service, we will create magnificently future with our customers.

● YIZHONG
PRODUCT ARCHITECTURE DIAGRAM

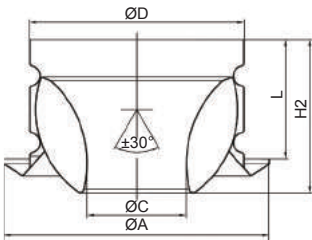
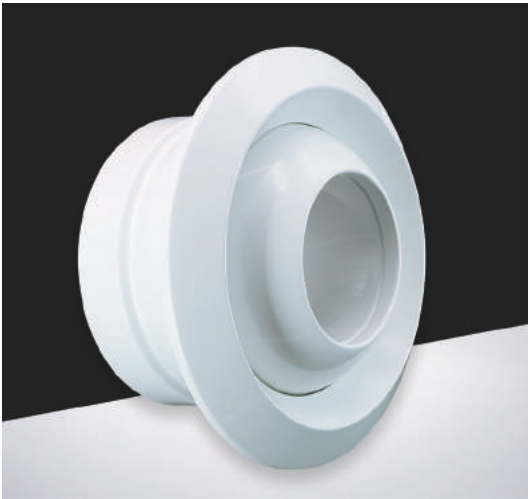


With constant pursuit and exploration, research and innovation on the core technology of purification, we have been always approved by the trade and consumers and achieved a great deal of honors, which makes our development more and more stable. Depending on the operation philosophy of good service and the spirit of persistence, we' ll continue trying our best to provide you with our high-quality products and better service.

HONOR
OF ENTERPRISE



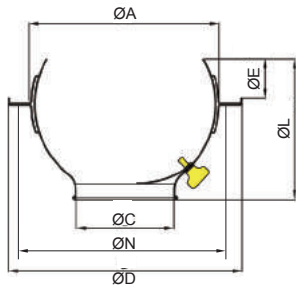
●FK026-Jet nozzle diffuser



Material: Aluminum
Surface finish: RAL9016 or RAL9010 white powder coating as standard.
Features:
·360° rotation
·Low noise
·30° in all direction
·Back with fan blade damper is available

Specification	100	125	150	160	200	250	315	350	400	450	500	630
ØD	98	122	147	157	197	247	312	347	397	447	497	625
ØA	139	172	200	210	265	314	390	433	495	559	622	779
ØC	45	61	75	80	105	128	165	185	210	235	256	323
L	63	72	83	91	107	135	174	186	218	235	259	335
H2	83	96	113	120	142	179	230	251	285	316	350	440

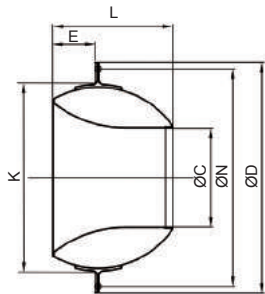
●FK043-Eyeball jet nozzle diffuser



Material: Aluminum
Surface finish: RAL9016 or RAL9010 white powder coating as standard.
Features:
·45° in all direction
·360° rotation

Specification	41	75	108	140	165	190	220	265
ØA	83	144	208	245	308	343	395	490
ØD	120	194	260	299	368	415	470	580
ØL	65	112	165	180	248	270	320	365
Mounting distance ØE	100	174	240	280	348	392.5	440	556

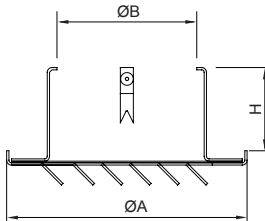
●FK048-DK-S Nozzle diffuser



Material: Aluminum
Surface finish: RAL9016 or RAL9010 white powder coating as standard.
Features:
·45° in all direction
·360° rotation

Specification ØC	60	75	80	105	130	160
ØN	157	174	230	230	281	348
ØD	169	194	254	251	299	365
L	73	90	154	123	156	200
E	23	29	63	40	51	67
K	116	145	215	190	245	310

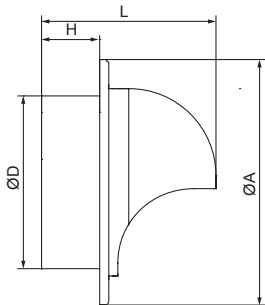
●FK024-Exhaust vent



Material: Aluminum
Surface finish: RAL9016 or RAL9010 white powder coating as standard.
Features:
·Louver type blades for exhaust
·Inside with aluminum net
·Clips inside for installation

Specification	100	125	150	200
ØA	147	170	197	250
ØB	97	122	147	197
H	66	68	68	72

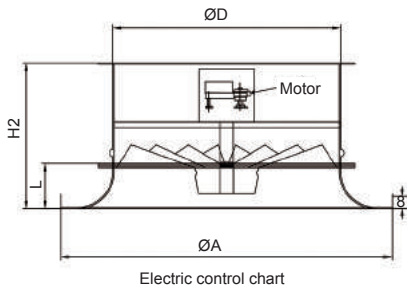
●FK041-Vent cap



Material: Aluminum
Surface finish: RAL9016 or RAL9010 white powder coating as standard.
Features:
·Water-proof type
·Inside with aluminum net
·Screw holes in surface or clips inside for installation

Specification	100	125	150	200
ØD	98	123	148	198
ØA	165	190	215	270
L	120	136	151	182

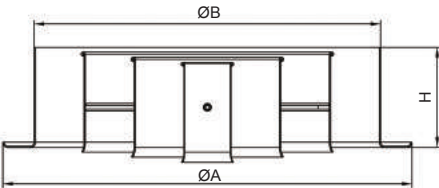
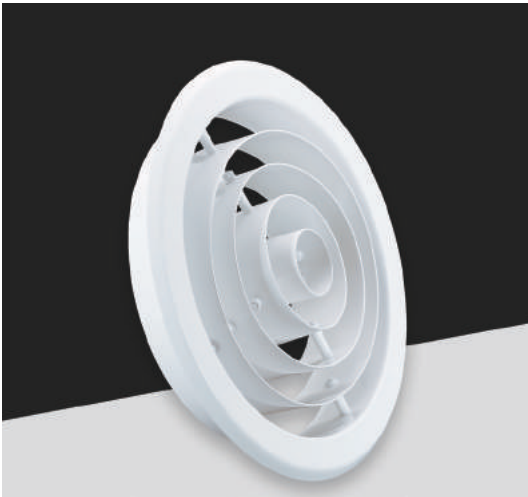
●FK025-Round swirl diffuser



Material: Aluminum
Surface finish: RAL9016 or RAL9010 white powder coating as standard.
Features:
·Blades are adjusted by turning inner core,45°Blade

Specification ØD	200	250	315	350	400	500	630	800
ØA	300	360	462	500	568	718	878	1070
H2 short height	85	90	118	140	152	188	246	
H2 high height	145	166	200	218	236	260	304	317
L	38	41	63	76	80	100	125	145
Mounting distance ØB	260	310	400	435	500	640	800	970

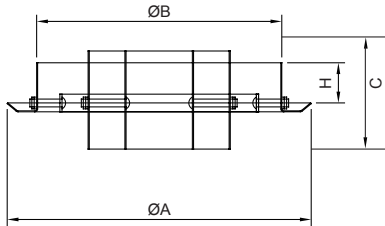
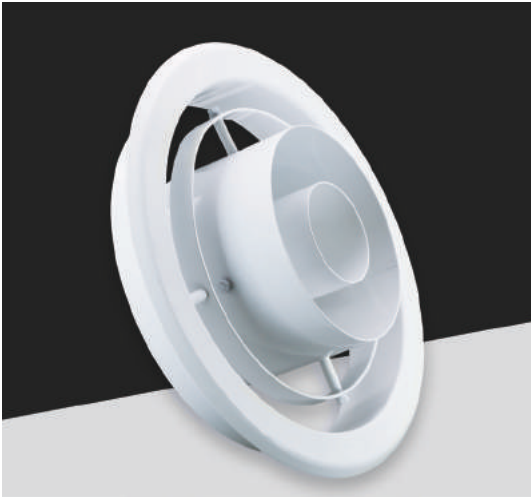
●FK047-Ring shape diffuser



Material: Aluminum
Surface finish: RAL9016 or RAL9010 white powder coating as standard.
Features:
·Air flow direction is adjustable up to 45°

Specification ØD	150	200	250	300	350	400
ØB	148	198	248	298	348	398
ØA	210	260	310	360	410	460
H	51	51	51	51	51	51

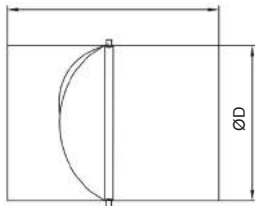
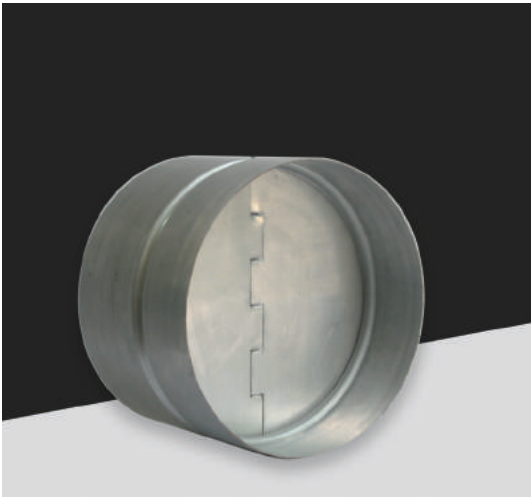
●FK047B-Ring shape diffuser



Material: Aluminum
Surface finish: RAL9016 or RAL9010 white powder coating as standard.
Features:
·Air flow direction is adjustable up to 45°

Specification	150	200	250	300	350	400
ØA	210	260	310	360	410	460
ØB	148	198	248	298	348	398
C	100	100	100	100	100	100
H	51	51	51	51	51	51

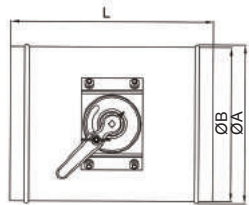
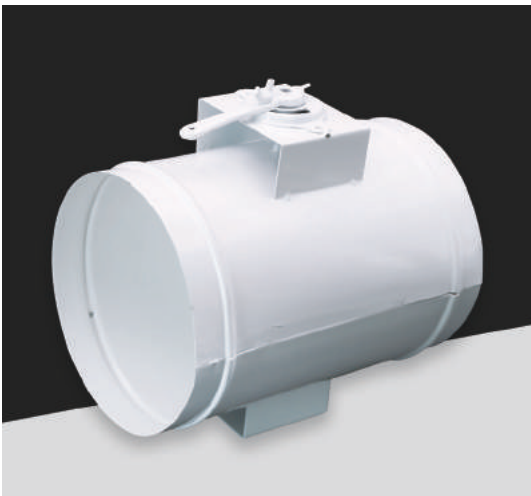
●FK029-Volume control damper



Material: Galvanized steel
Surface finish: Mill finish
Features:
·Used as simple backdraft dampers in a duct system
·Flaps are spring-loaded
·Gaskets around the blades

ØD	80	100	125	150
----	----	-----	-----	-----

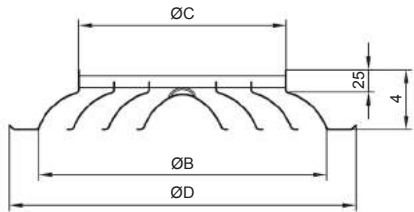
●FK038-Round volume control damper



Material: Galvanized steel
Surface finish: Mill finish
Features:
·Hand positioned at any desired angle
·Manual control or motorized control is available
·Gaskets around the blades

ØA	100	125	150	200	250	300	350	400
ØB	95	120	145	195	245	295	345	315
L	150	170	200	250	300	350	400	450

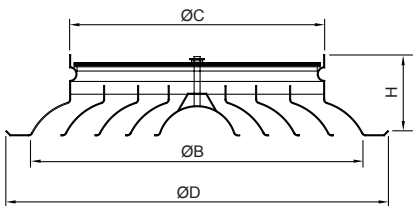
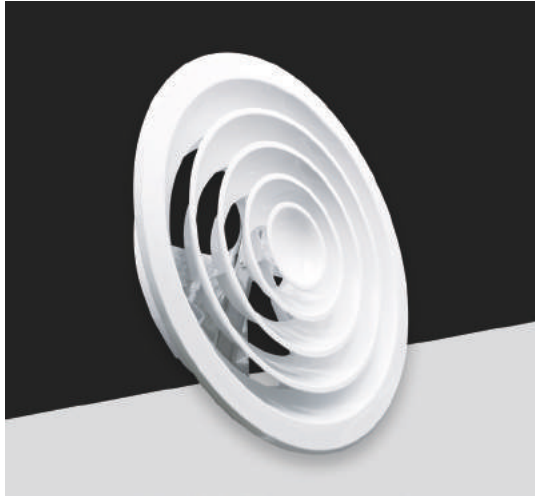
●FK004-Round ceiling diffuser



Material: Aluminum
Surface finish: RAL9016 or RAL9010 white powder coating as standard, other colors are required. Anodized finish is available.
Features:
·Designed with fixed center core
·Back with damper is available
·360° air flow diffusion

D	Ø230	Ø250	Ø300	Ø350	Ø380	Ø400	Ø450	Ø500	Ø530	Ø560	Ø600	Ø650	Ø700	Ø750	Ø800	Ø1000
ØB	170	190	240	290	320	340	390	440	470	490	540	590	620	690	700	870
C	78	98	148	198	228	248	298	348	378	398	448	498	548	598	448	498
H	65	65	65	65	65	65	65	65	65	65	65	65	65	65	135	185

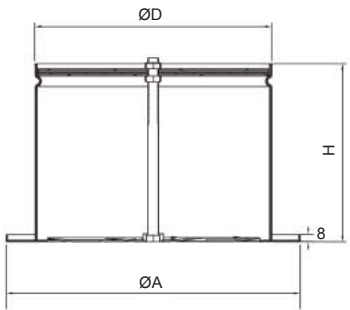
●FK005-Round ceiling diffuser with damper



Material: Aluminum
Surface finish: RAL9016 or RAL9010 white powder coating as standard, other colors are required. Anodized finish is available.
Features:
·360° air flow diffusion
·Designed with fixed center core
·Back with damper for controlling air volume
·Turning center core to adjust back damper

ØD	Ø230	Ø250	Ø300	Ø350	Ø380	Ø400	Ø450	Ø500	Ø530	Ø560	Ø600	Ø650	Ø750	Ø800	Ø1000
ØB	170	190	240	290	320	340	390	440	470	490	540	590	690	700	870
ØC	78	98	148	198	228	248	298	348	378	398	448	498	598	448	498
H	95	95	95	95	95	95	95	95	95	95	95	95	95	135	185

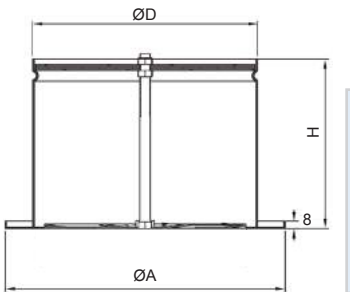
●FK032-Round floor diffuser



Material: Aluminum
Surface finish: RAL9016 or RAL9010 white powder coating as standard
Features:
·Integral adjustable damper
·Includes collar and locking ring

Specification	100	125	150	180
ØD	97	123	147	177
ØA	140	166	180	220
H	120	120	130	130

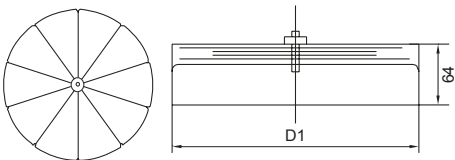
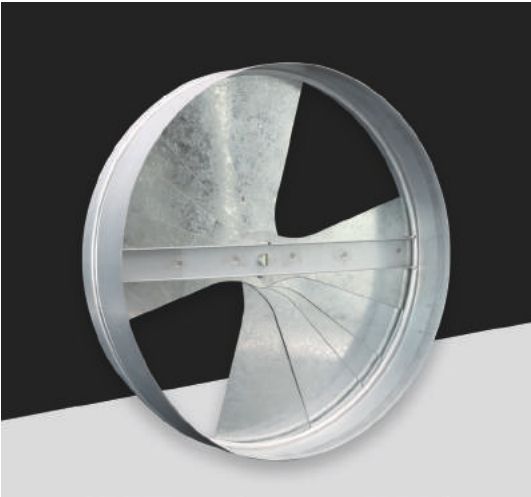
●FK050-Square floor diffuser



Material: Aluminum
Surface finish: RAL9016 or RAL9010 white powder coating as standard.
Features:
·Damper in back
·Screw driver adjust air volume in the center screw hole
·Clips inside for installation

Specification	100	125	150	180
ØD	97	123	147	177
AxA	157	180	200	236
H	120	120	130	130

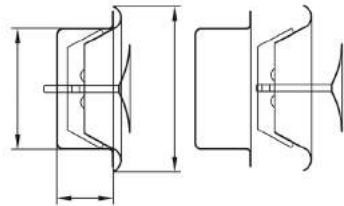
●FK022-Fan blade damper



Material: Steel
Surface finish: Mill finish.
Features:
·Use in round duct application
·Damper is adjusted at the screwdriver operator slot
·Have gang operated radial blades

D1	100	125	150	200	230	250	300	350	380	400	450	500
----	-----	-----	-----	-----	-----	-----	-----	-----	-----	-----	-----	-----

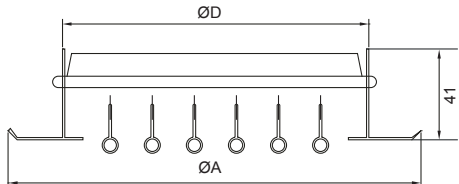
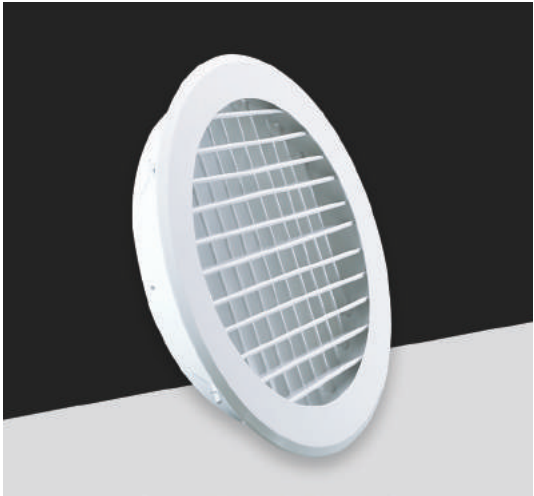
●FK020-Supply air disc valve



Material: Steel
Surface finish: RAL9016 or RAL9010 white powder coating as standard.
Features:
·Integral adjustable damper
·Includes collar and locking ring
·Delivers a uniform 360° air discharge pattern
·Designed for surface mounting applications

Specification	100	125	150	160	200
ØA	98	123	148	158	198
ØB	138	165	200	210	250

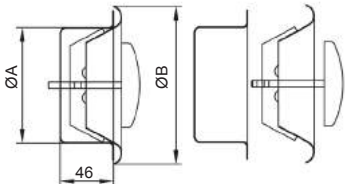
●FK031-Round double deflection air grille



Material: Aluminum
Surface finish: RAL9016 or RAL9010 white powder coating as standard.
Features:
·The front blades may be either horizontal or vertical
·Damper in back is available
·Rectangle shape type is available

ØA	200	250	300	350	400	450	500
ØD	150	200	250	300	350	400	450

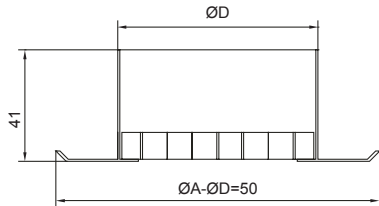
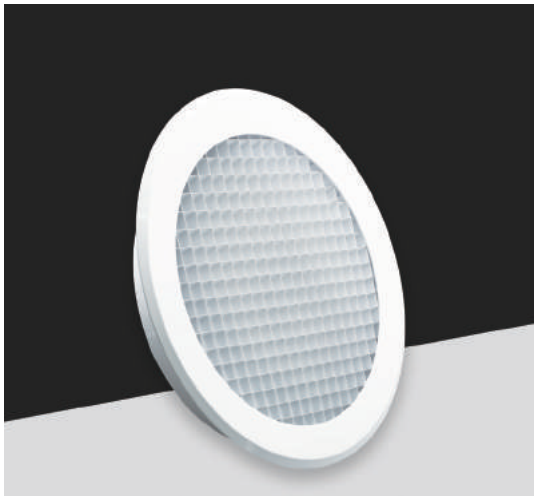
●FK021-Exhaust air disc valve



Material: Steel
Surface finish: RAL9016 or RAL9010 white powder coating as standard.
Features:
·Integral adjustable damper
·Includes collar and locking ring
·Delivers a uniform 360° air discharge pattern
·Designed for surface mounting applications

Specification	100	125	150	160	200
ØA	98	123	148	158	198
ØB	138	165	200	210	250

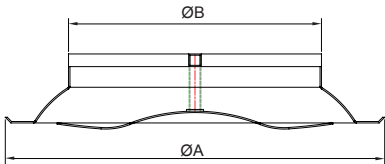
●FK019-Round eggcrate air grille



Material: Aluminum
Surface finish: RAL9016 or RAL9010 white powder coating as standard.
Features:
Aluminum egg crate core space is 12.5x12.5mm
Wall and ceiling mount
Frame width 30mm

Specification	100	125	150	200	230	250	300	380	450
ØD	98	123	148	198	228	248	298	378	448

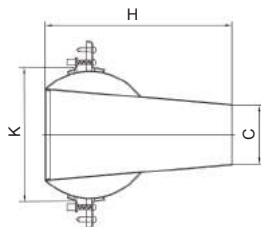
●FK033-Supply air disc valve



Material: Aluminum
Surface finish: RAL9016 or RAL9010 white powder coating as standard.
Features:
Integral adjustable damper
Includes collar and locking ring
Delivers a uniform 360° air discharge pattern
Designed for surface mounting applications

Specification	250	300	350	380	400	450	500
ØA	190	240	290	320	340	390	440
ØB	100	150	200	230	250	300	350

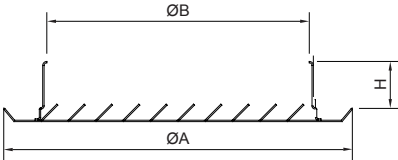
●FK037-Jet diffuser



Material: Aluminum
Surface finish: RAL9016 or RAL9010 white powder coating as standard.
Features:
Easy adjustment
360° rotation
Low noise
Directional 30°

Specification ØC	95	150	115
H	220	360	285
K	195	310	245

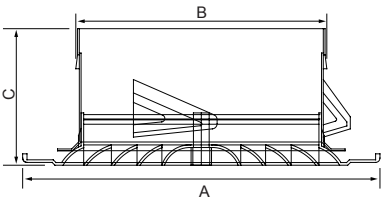
●FK023-Round return air grille



Material: Aluminum
Surface finish: RAL9016 or RAL9010 white powder coating as standard.
Features:
Stamping blades
Ideal for use on the ceiling or wall
Clips inside for installation

Specification	ØC	100	150	200
ØA		153	200	250
ØB		98	149	198
H		45	45	45

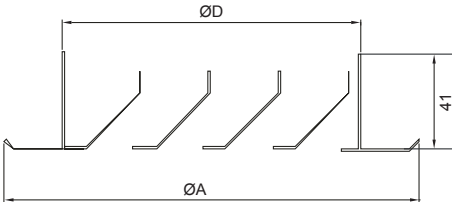
●ABS-01 Round ceiling diffuser



Material: Plastic
Features:
360° air flow diffusion
Duct mounting directly
Center button turning for adjusting air volume

Specification	80	100	125	150	200
A(mm)	112	145	167	192	246
B(mm)	72	96	119	147	192
C(mm)	70	70	70	70	70

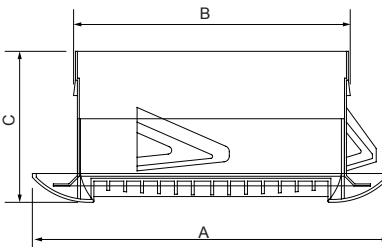
●FK034-Round return air louver



Material: Aluminum
Surface finish: RAL9016 or RAL9010 white powder coating as standard.
Features:
Blades are in 45° angles
Ceiling or wall mounting is available
Water-proof type
Rectangle shape type is available

ØA	200	250	300	350	400	450	500
ØD	150	200	250	300	350	400	450

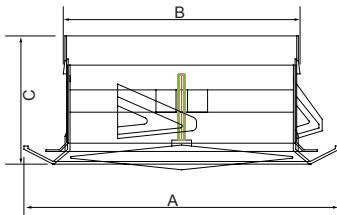
●ABS-016 Round air grille



Material: Plastic
Features:
360° air flow diffusion
Duct mounting directly
Center button turning for adjusting air volume

Specification	80	100	125	150
A(mm)	119	136	151	185
B(mm)	77	96	119	146
C(mm)	80	80	80	80

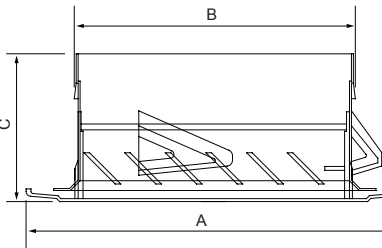
●ABS-014 Exhaust air disc valve



Material: Plastic
Features:
Integral adjustable damper
Includes collar and locking ring
Delivers a uniform 360° air discharge pattern
Designed for surface mounting applications

Specification	80	100	125	150	200
A(mm)	111	150	169	195	250
B(mm)	72	96	119	147	192
C(mm)	88	88	88	88	88

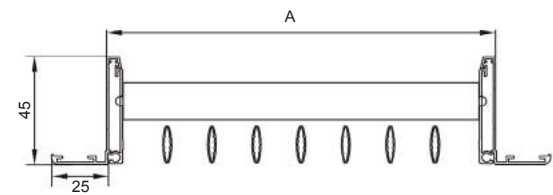
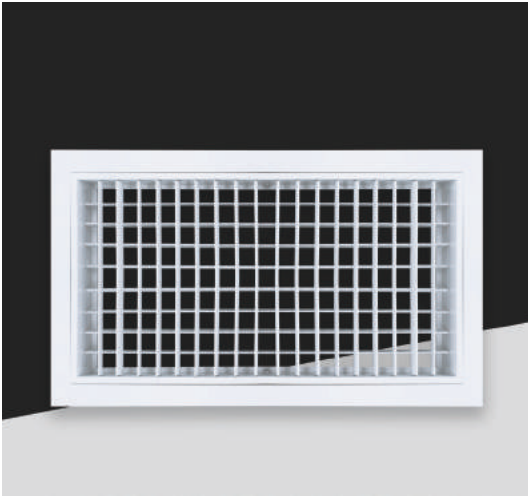
●ABS-017 Round air grille in 45° angle blades



Material: Plastic
Features:
45° angle blades
With plastic net inside
Duct mounting directly

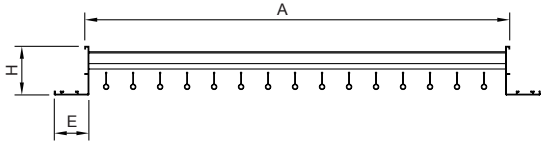
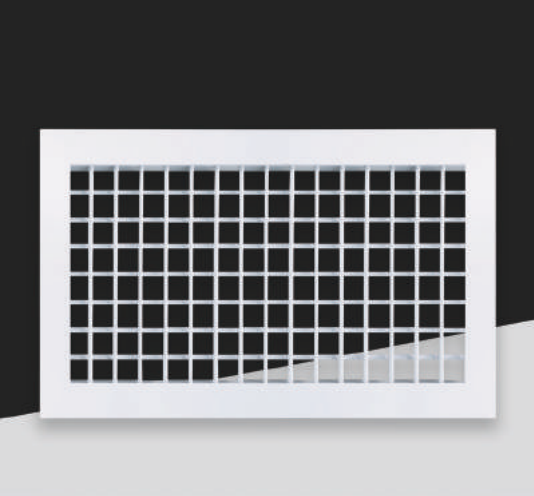
Specification	80	100	125	150	200
A(mm)	110	144	167	192	245
B(mm)	72	96	119	147	192
C(mm)	70	70	70	70	70

●FK007D-Removable single/double deflection air grille



Material: Aluminum
Surface finish: RAL9016 or RAL9010 white powder coating as standard, other colors are required. Anodized finish is available.
Features:
Vertical or horizontal blades in front is available
Removable core
Ellipse shape blades
Back with collar or damper is available

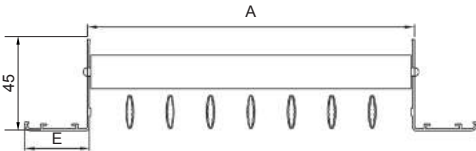
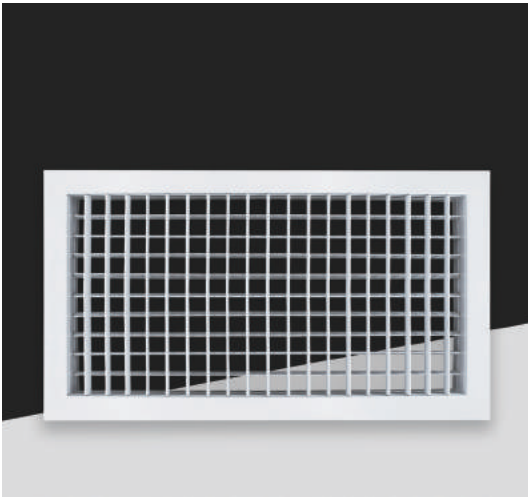
●FK040-Double deflection air grille



Material: Aluminum
Surface finish: RAL9016 or RAL9010 white powder coating as standard.
Features:
Adjustable blades
Vertical or horizontal blades in front is available
Straight shape blade
Back with collar or damper is available

E	19	25	32				
H	38	45	50				

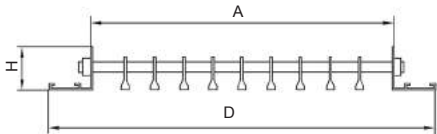
●FK008A-Adjustable single/double deflection air grille



Material: Aluminum
Surface finish: RAL9016 or RAL9010 white powder coating as standard.
Features:
Adjustable blades
Vertical or horizontal blades in front is available
Olive shape blades
Back with collar or damper is available

E	25	32		
---	----	----	--	--

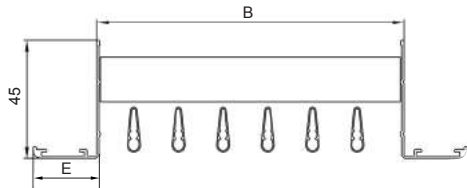
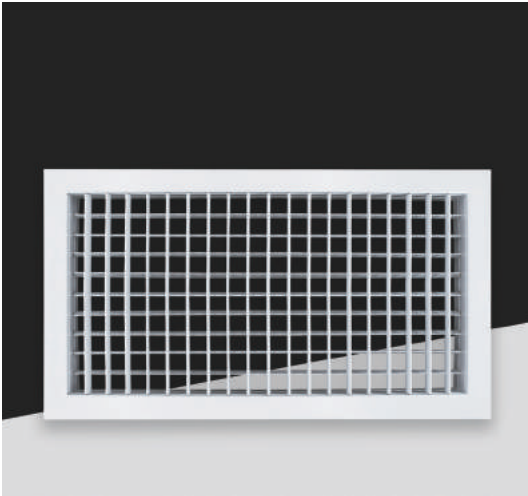
●FK011-Linear bar grille with 0° angle blades



Material: Aluminum
Surface finish: RAL9016 or RAL9010 white powder coating as standard.
Features:
All deflection bars are fixed
Blades are in 0° angles
Back with collar or damper is available
Screw holes in the surface is available

Specification	1	2	3	4
D-A	50	50	38	38
H	45	25	38	25

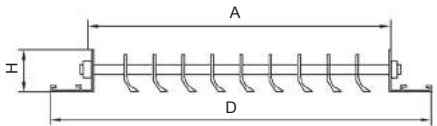
●FK008B-Adjustable single/double deflection air grille



Material: Aluminum
Surface finish: RAL9016 or RAL9010 white powder coating as standard.
Features:
Adjustable blades
Vertical or horizontal blades in front is available
Drip shape blades
Back with collar or damper is available

E	25	32		
---	----	----	--	--

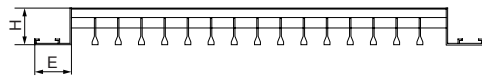
●FK010-Linear bar grille with 30° angle blades



Material: Aluminum
Surface finish: RAL9016 or RAL9010 white powder coating as standard.
Features:
All deflection bars are fixed
Blades are in 30° angles
Back with collar or damper is available
Screw holes in the surface is available

Specification	1	2	3	4
D-A	50	50	38	38
H	45	25	38	25

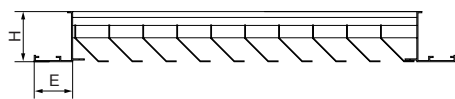
●FK042- Linear bar grille with 0° angle blades



Material: Aluminum
Feature:
- White spray/anodized/mill finished can be available.
We supply materials and accessories also.

Model	1	2	3	4
Specification				
D-A	50	50	38	38
H	45	25	38	25

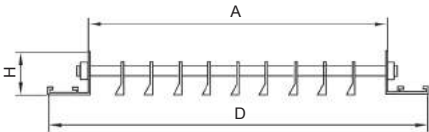
●FK044-Return air grille



Material: Aluminum
Feature:
- White spray/anodized/mill finished can be available.
We supply materials and accessories also.
Model/specification

E	16	19					
H	27	27					

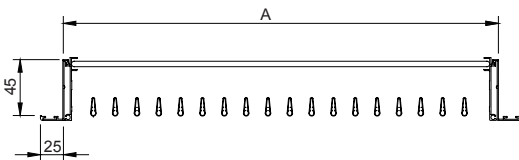
●FK009-15° Linear bar grille with 15° angle blades



Material: Aluminum
Feature:
- White spray/anodized/mill finished can be available.
We supply materials and accessories also.

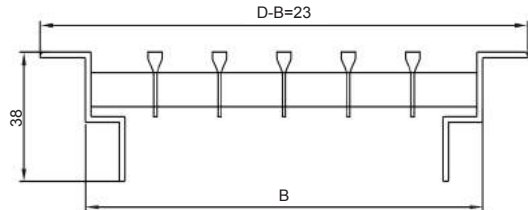
Model	1	2	3	4
Specification				
D-A	50	50	38	38
H	45	25	38	25

●FK030-Removable single layer diffuser



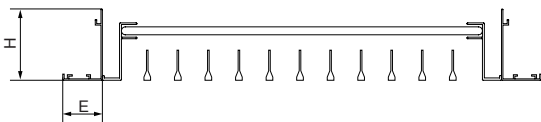
Material: Aluminum
Feature:
- White spray/anodized/mill finished can be available.
We supply materials and accessories also.

●FK061-0° Floor air grille with 0° angle blades



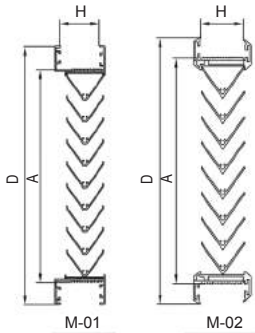
Material: Aluminum
Feature:
- White spray/anodized/mill finished can be available.
We supply materials and accessories also.

●FK039-Opened Linear bar grille



Material: Aluminum
Feature:
- White spray/anodized/mill finished can be available.
We supply materials and accessories also.

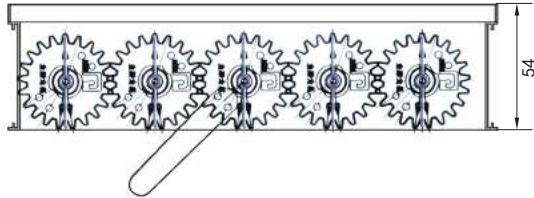
●FK014-Fixed door louver



Material: Aluminum
Feature:
- White spray/anodized/mill finished can be available.
We supply materials and accessories also.

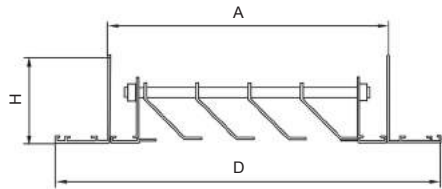
Specification	Model	M-01	M-02			
D-A		36	26			
H		30	27			

●FK027-OB



Material: Aluminum
Feature:
- White spray/anodized/mill finished can be available.
We supply materials and accessories also.

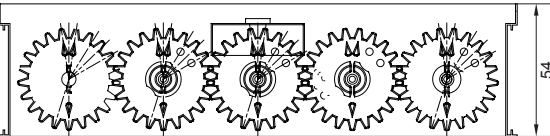
●FK006-Open hinged air return grille



Material: Aluminum
Feature:
- White spray/anodized/mill finished can be available.
We supply materials and accessories also.

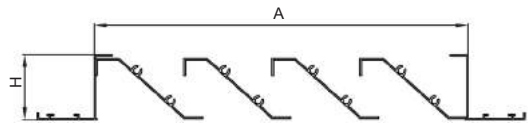
Specification	Model	1	2	3		
D-A		60	50	60		
H		50	45	45		

●FK027A-OB-Screw type



Material: Aluminum
Feature:
- White spray/anodized/mill finished can be available.
We supply materials and accessories also.

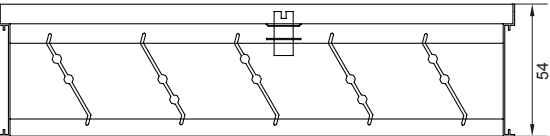
●FK012-Waterproof louver



Material: Aluminum
Feature:
- White spray/anodized/mill finished can be available.
We supply materials and accessories also.

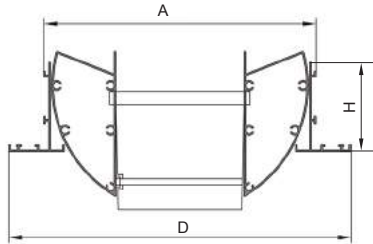
Specification	1	2
D-A	60	60
H	50	38

●FK027B-OB-Without wheel



Material: Aluminum
Feature:
- White spray/anodized/mill finished can be available.
We supply materials and accessories also.

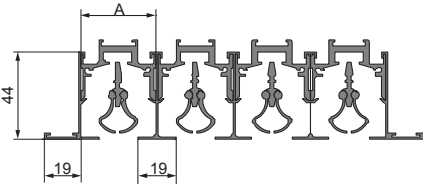
●FK015-Drum shape jet diffuser



Material: Aluminum
Feature:
- White spray/anodized/mill finished can be available.
We supply materials and accessories also.

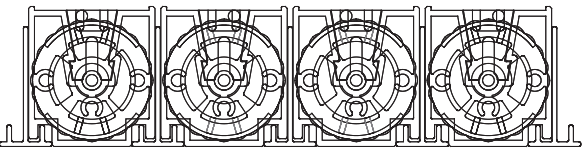
Specification	Model	FK015-A	FK015-B	
D		40	62	
H		50	80	

●FK013A-Linear slot diffuser



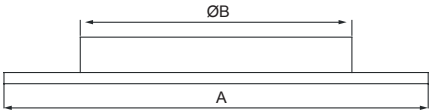
Material: Aluminum
Feature:
- White spray/anodized/mill finished can be available.
We supply materials and accessories also.
-According to the design requirements

●FK013B-Linear slot diffuser



Material: Aluminum
Feature:
- White spray/anodized/mill finished can be available.
We supply materials and accessories also.
-According to the design requirements

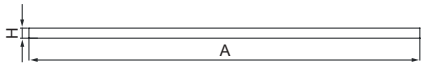
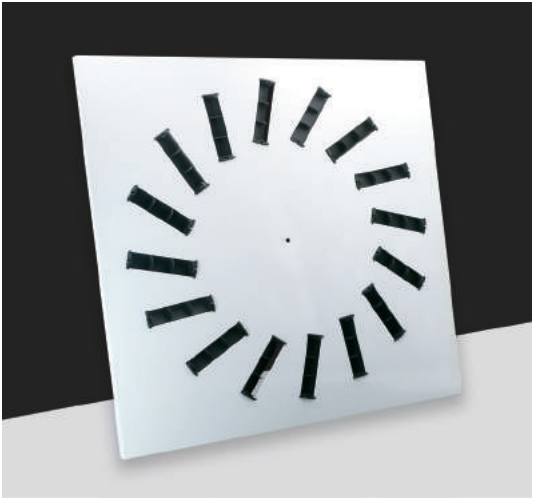
●FK063 Swirl ceiling diffuser



Material: Steel
Feature:
- White spray/anodized/mill finished can be available.
-All frame is stamping,no welding.

Specification	600x600	600x600	600x600	600x600	600x600	600x600
A (mm)	600	600	600	600	600	600
ØB (mm)	125	160	200	250	315	400

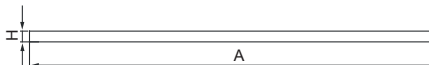
●FK064-24B Swirl ceiling diffuser



Material: Steel+Plastic
Feature:
- White spray
-All frame is stamping,no welding.

Specification	600x600	
A (mm)	600	

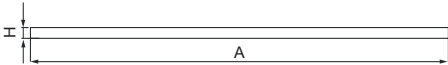
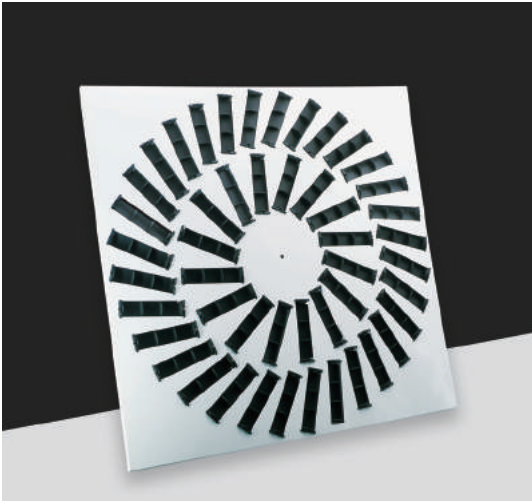
●FK065-36B Swirl ceiling diffuser



Material: Steel+Plastic
Feature:
- White spray
-All frame is stamping,no welding.

Specification	600x600	
A (mm)	600	

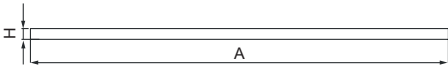
●FK065-48B Swirl ceiling diffuser



Material: Steel+plastic
Feature:
- White spray
-All frame is stamping,no welding.

Specification	600x600	
A (mm)	600	

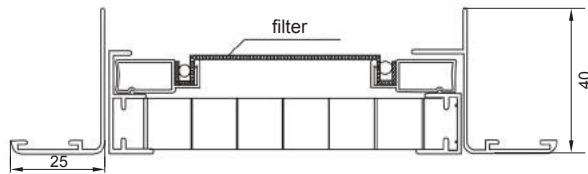
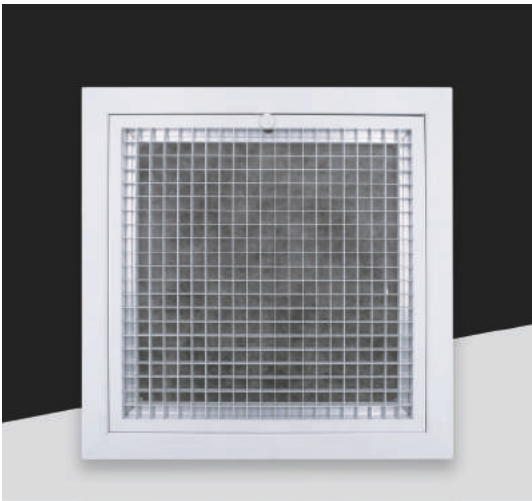
●FK066-48B Swirl ceiling diffuser



Material: Steel+plastic
Feature:
-White spray
-All frame is stamping,no welding

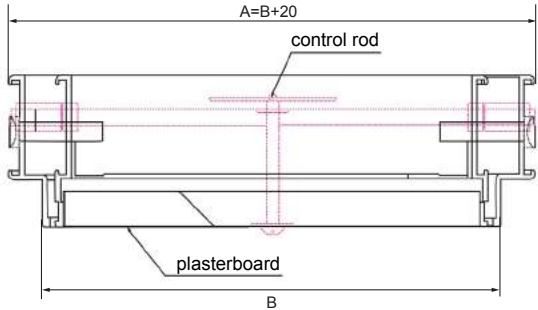
Specification	600x600	
A (mm)	600	

●FK016-Eggcrate diffuser with filter



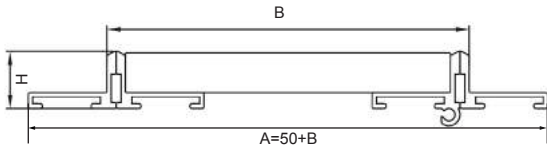
Material:Aluminum
Feature:
- White spray/anodized/mill finished can be available.
We supply materials and accessories also.
With net/without net.

●FK017-Access door



Material: Aluminum
Surface finish:RAL9016 or RAL9010 white color. Mill finish is available.

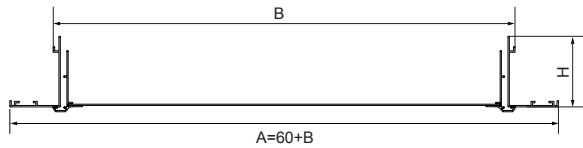
●FK017-A Access door



Material: Aluminum
Surface finish:RAL9016 or RAL9010 white color. Mill finish is available.

BxB	200x200	250x250	300x300	350x350	400x400
BxB	450x450	500x500	550x550	600x600	1200x600

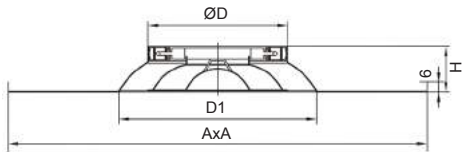
●FK017-B Access door



Material: Aluminum
Surface finish:RAL9016 or RAL9010 white color. Mill finish is available.
Feature:
-With plasterboard.

BxB	200x200	250x250	300x300	350x350	400x400
BxB	450x450	500x500	550x550	600x600	1200x600

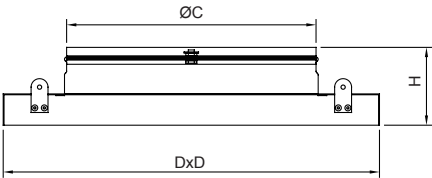
●FK028-Round ceiling diffuser



Material: Aluminum
Feature:
- white spray/anodized/can be available.
-We supply materials and accessories also.
-Can add damper to adjust air volume.

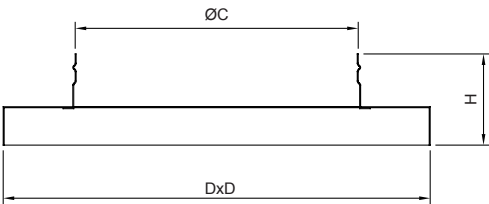
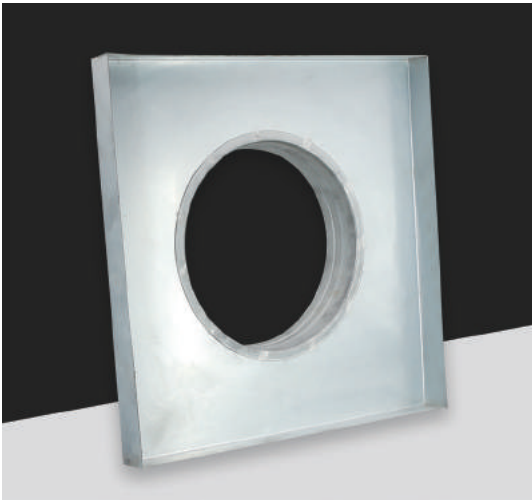
Specification	200	250	300
ØD	198	248	298
ØD1	300	337	385
AxA	448/595	448/595	448/595
H	65	65	65

● FK035-Square turn round sector with damper



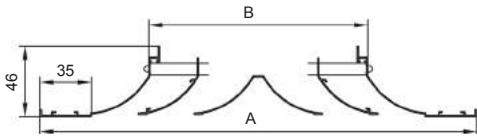
Material: Steel
Size: Customized
Surface finish: Paint in black
Color:Other colors is available.

● FK036-Square turn round cover



Material: Steel
Size: Customized
Surface finish: Mill finish. painting is available.

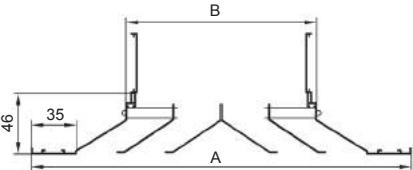
●FK003/A-4 Way Square ceiling diffuser



Material: Aluminum
Feature:
- White spray/anodized/mill finished can be available.
-We supply materials and accessories also.
-Frame:CK050

Specification	150x150	225x225	300x300	375x375	450x450
A(mm)	295	370	445	520	595
B(mm)	148	223	298	373	448

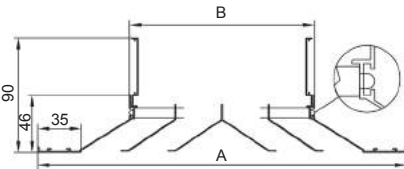
● FK003/B-4 Way Square ceiling diffuser



Material: Aluminum
Feature:
- White spray/anodized/mill finished can be available.
-We supply materials and accessories also.
-Frame:CK048
-stamping for all frame,no welding.

Specification	150x150	225x225	300x300	375x375	450x450
A(mm)	295	370	445	520	595
B(mm)	148	223	298	373	448

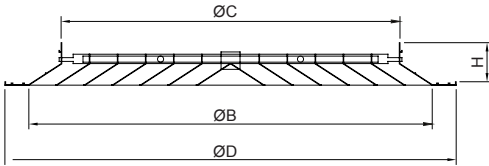
● FK003/C-4 Way Square ceiling diffuser



Material: Aluminum
Feature:
- White spray/anodized/mill finished can be available.
-We supply materials and accessories also.
-outer Frame:CK051
-stamping for all frame,no welding.

Specification	150x150	225x225	300x300	375x375	450x450
A(mm)	295	370	445	520	595
B(mm)	148	223	298	373	448

●FK003/F-4 Way Square ceiling diffuser



Material: Aluminum alloy
Feature:
-Thickness:0.8mm
Color: Anodized, mill finish, powder coated white or other color on request
Outer frame is SH820C
Inner frames are integrally formed with the stamping process, no welding point.

Neck size	150x150	225x225	300x300	375x375	450x450
A(mm)	295	370	445	520	595
B(mm)	148	223	298	373	448

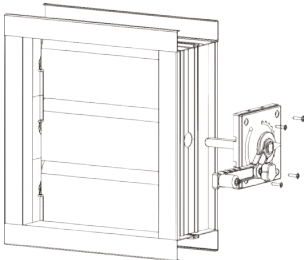
●ABS-001 Air adapt collar



Application: Air conditioning diffuser air mask, equipped with four square aluminium diffuser cover.

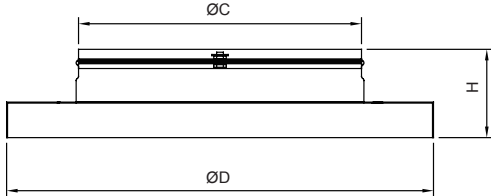
Equipped with aluminum face size	Square inner size	rounded neck size
A 600x600mm	A 476x476mm	A 6"8"10"12"14
B 480x480mm	B 360x360mm	B 6"8"10"12"14
C 450x450mm	C 330x330mm	C 6"8"10"12
D 400x400mm	D 280x280mm	D 6"8"10"
E 350x350mm	E 230x230mm	E 6"8"
F 300x300mm	F 180x180mm	F 4"6"

●FK002- Aluminum air control damper



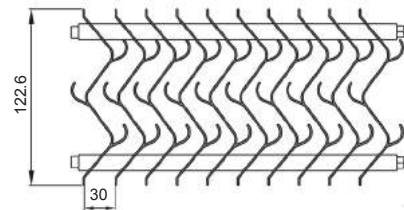
Material: Aluminum alloy
Color: Anodized
All the sizes can be produced upon request.

●ABS-002 Air adapt collar with fan blade damper



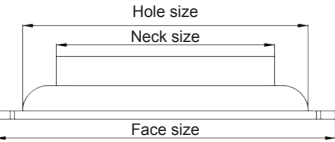
ABS Radius Covers a circular air flow control valve
Installation size: A-6" B-8" C-10" D-12" E-14"
Feature:
-Good seal, switch adjusting convenient screwdriver adjust is ok.
Application: Air conditioning diffuser air valve

●FK053-Water-proof Eliminator



Material: Aluminum alloy
Feature: Color mill finish, anodized
All the sizes can be produced upon request.

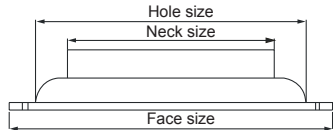
●ABS-003A/B Round diffuser



Feature:
- Screw hole cap Spin.
- Non-attached fan control switch.
-The decoration

Face size	Hole size	Neck size
A 405mm	A Ø340mm	Ø6"8"10"12"
B Ø510mm	B Ø445mm	Ø6"8"10"12"14"

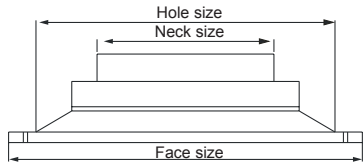
●ABS-004 A/B Square turn to round diffuser



Feature:
-Diffusion-type air outlet to attach fan control switch
Application:Light steel frame

Face size	Hole size	Neck size
A 603x603mm	A 455x455mm	Ø 6"8"10"12"14"
B 595x595mm	B 455x455mm	Ø 6"8"10"12"14"

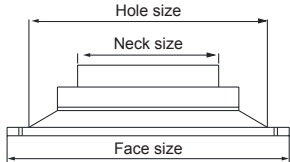
●ABS-007A/B Square diffuser



Feature:
- Screw hole cap Spin
- Attach fan control switch
Applications:Light steel frame
Annex:Radius mask

Face size	Hole size	Neck size
A 450x450mm	A 390x390mm	AØ6"8"10"12"
B 400x400mm	B 340x340mm	BØ6"8"10"

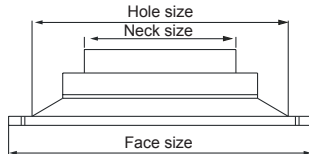
●ABS-008A/B Square diffuser



Feature:
- Integrated project design
- Attach fan control switch
Application:Light steel frame
Annex:Radius mask

Face size	Hole size	Neck size
A 603x603mm	A 420x420mm	Ø6"8"10"12"14"
B 595x595mm	B 420x420mm	Ø6"8"10"12"14"

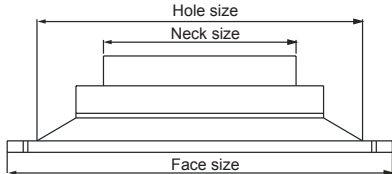
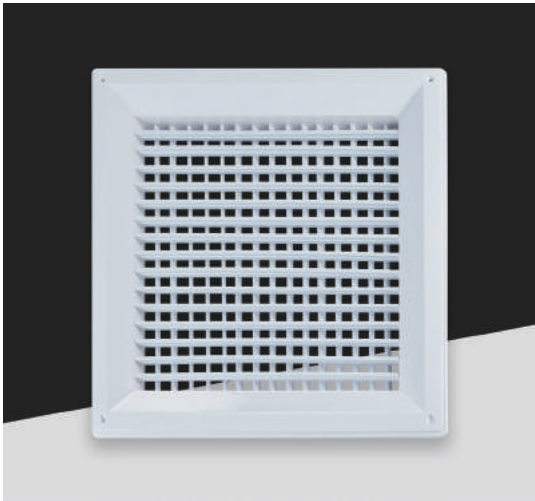
●ABS-007C/D Square diffuser



Feature:
- Integrated project design
- Attach fan control switch
Applications:Light steel frame
Annex:Radius mask

Face size	Hole size	Neck size
C 350x350mm	C 290x290mm	CØ6"8"
D 300x300mm	D 240x240mm	DØ6"8"

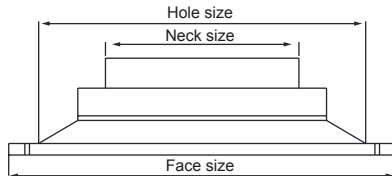
●ABS-005 Square double layer diffuser



Feature:
- Leaf blades can be adjusted
- Screw hole cap spin
- Attach fan control switch
Applications:Light steel frame
Annex:Radius mask

Face size	Hole size	Neck size
450x450mm	390x390mm	Ø6"8"10"12"

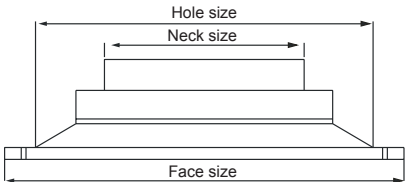
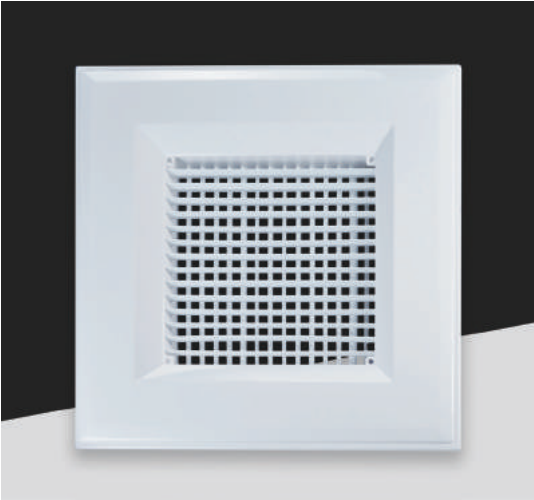
●ABS-008C Square diffuser



Feature:
- Integrated project design
- Attach fan control switch
Application:Light steel frame
Annex:Radius mask

Face size	Hole size	Neck size
C 600x600mm	C 540x540mm	Ø6"8"10"12"14"

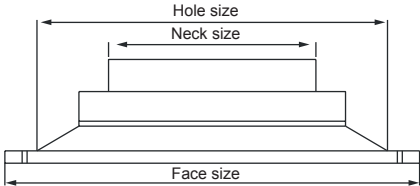
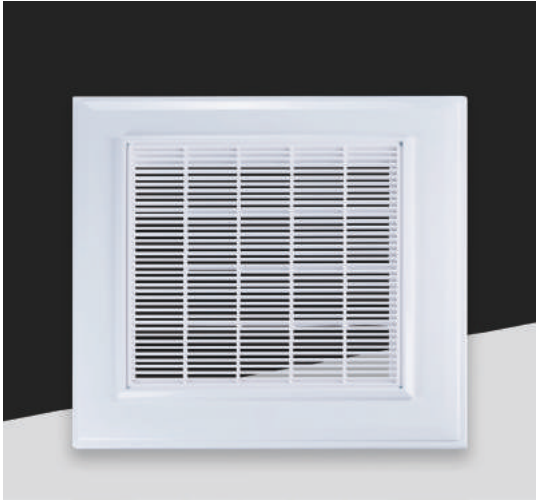
●ABS-006A/B Square double layer diffuser



Feature:
- Integrated project design
- Attach fan control switch
Application:Light steel frame
Annex:Radius mask

Face size	Hole size	Neck size
A 603x603mm	A 420x420mm	Ø6"8"10"12"
B 595x595mm	B 420x420mm	Ø6"8"10"12"

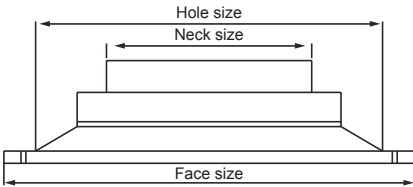
●ABS-011A/B Square linear bar grille



Feature:
- Leaf blades can be adjusted
- Attach fan control switch
Application:Light steel frame
Annex:Radius mask

Face size	Hole size	Neck size
A 603x603mm	A 420x420mm	Ø6"8"10"12"14"
B 595x595mm	B 420x420mm	Ø6"8"10"12"14"

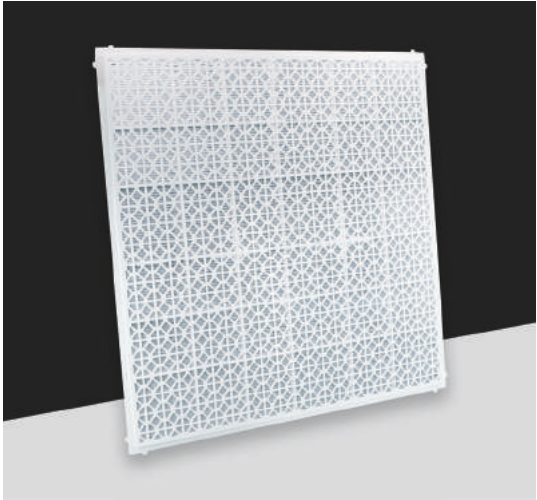
●ABS-009 Square single layer grille



Feature:
- Leaf blades can be adjusted
- Screw hole cap Spin
- Attach fan control switch
Applications:The decoration
Annex:Radius mask

Face size	Hole size	Neck size
450x450mm	390*390mm	Ø6"8"10"12"

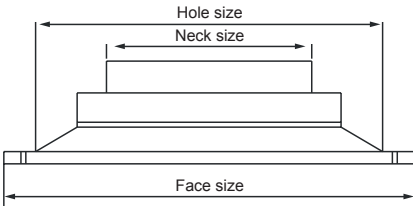
●ABS-012A/B Ceiling diffuser with filter



Feature:
- The light steel frame and plate size
Application:Light steel frame
Attachments:Nylon filter

Face size		
A 603x603mm		
B 595x595mm		

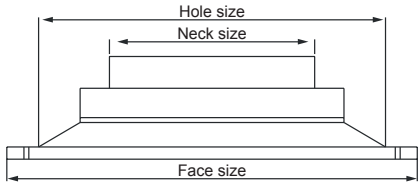
●ABS-010 A/B Square single layer diffuser



Feature:
- Leaf blades can be adjusted
- Attach fan control switch
Application:Light steel frame
Annex:Radius mask

Face size	Hole size	Neck size
A 603x603mm	A 420x420mm	Ø6"8"10"12"
B 595x595mm	B 420x420mm	Ø6"8"10"12"

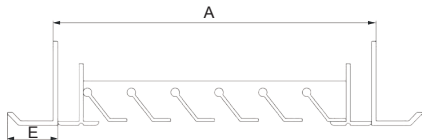
●ABS-013A/B Square linear bar grille



Feature:
- Leaf blades can be adjusted
- Screw hole cap Spin
- Attach fan control switch
Applications:The decoration
Annex:Radius mask

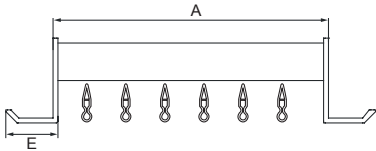
Face size	Hole size	Neck size
A 450x450mm	A 390x390mm	Ø6"8"10"12"

●PVC-001 Open hinged air return grille



Size specifications:To be customized
Material:PVC
Application:Light steel frame or decoration

●PVC-004 Double layer diffuser



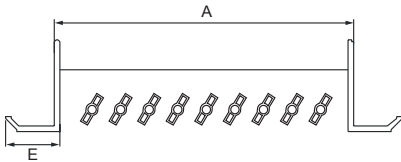
Size specifications:To be customized
Material:PVC
Feature:Blades can be adjusted
Application:Light steel frame or decoration

●PVC-002 0° Linear bar grille



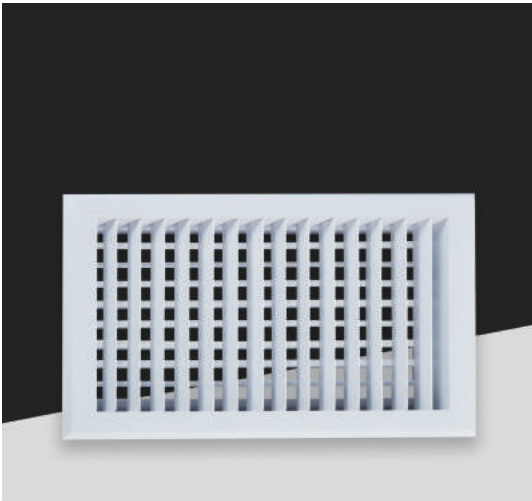
Size specifications :To be customized
Material:PVC
Application:Light steel frame or decoration

●PVC-005 30° Linear bar grille



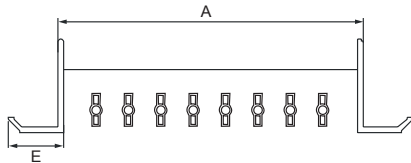
Size specifications:To be customized
Material:PVC
Feature:Blades can be adjusted
Application:Light steel frame or decoration

●PVC-003 Double layer diffuser



Size specifications:To be customized
Material:PVC
Application:Light steel frame or decoration

●PVC-006 0° Linear bar grille



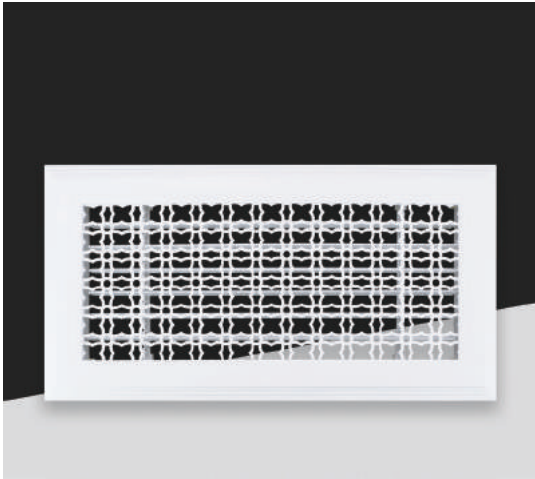
Size specifications:To be customized
Material:PVC
Feature:Blades can be adjusted
Application:Light steel frame or decoration

●PVC-007 Decorative wall grille



Size specifications:To be customized
Material:PVC
Application:Decoration

●PVC-008 Decorative wall grille



Size specifications:To be customized
Material:PVC
Application:Decoration

●PVC-009 Decorative wall grille



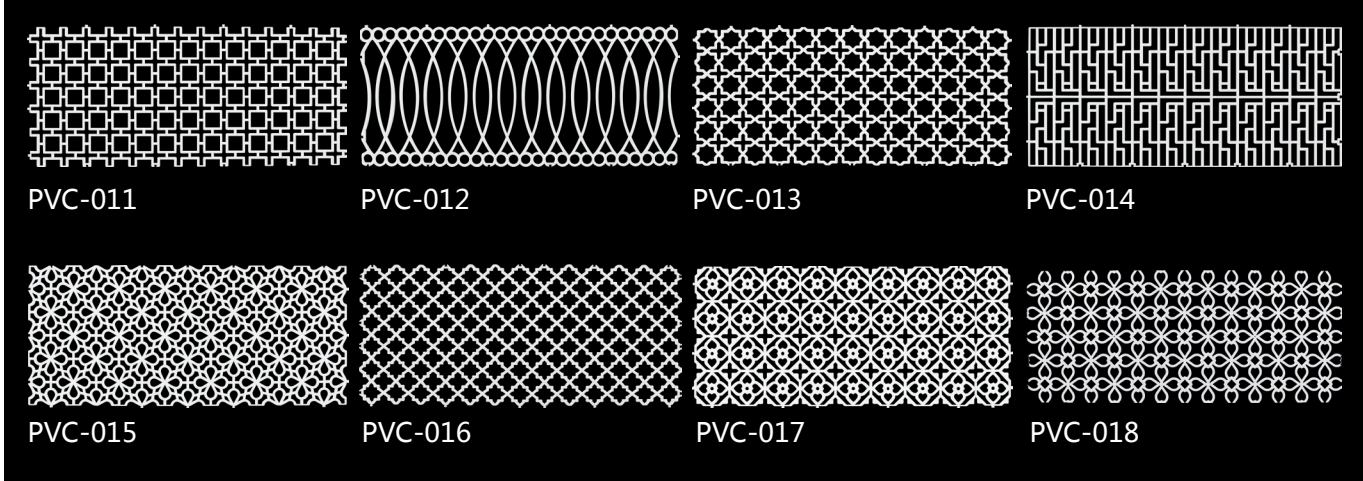
Size specifications:To be customized
Material:PVC
Application:Decoration

●PVC-010 Decorative wall grille

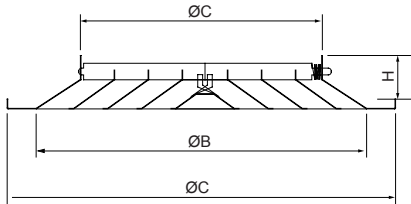


Size specifications:To be customized
Material:PVC
Application:Decoration

Options:

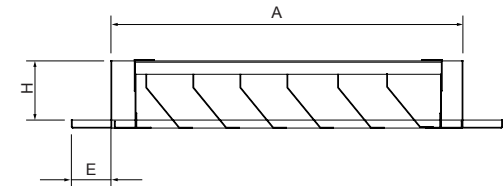


●BX-001 SUS Square diffuser



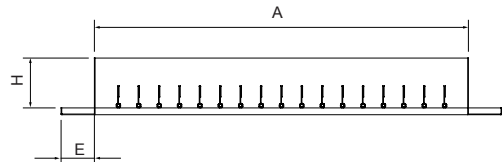
Size specifications:To be customized
Material:Stainless steel
Application:Light steel frame or decoration

●BX-002 SUS Opened air return grille



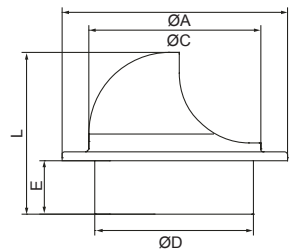
Size specifications:To be customized
Material:Stainless steel
Application:Light steel frame or decoration

●BX-003 SUS Square single layer bar grille



Size specifications:To be customized
Material:Stainless steel
Application:Light steel frame or decoration

●BX-004 SUS Ari vent cap



Feature:
Used in kitchen, bathroom,outside wall
With air intake louvers and stainless steel insect mesh.
Material:Stainless steel

Size(mm)	100	125	150	200
ØD	98	123	148	198
ØA	165	190	215	270
ØC	115	140	165	215
L	120	136	151	182